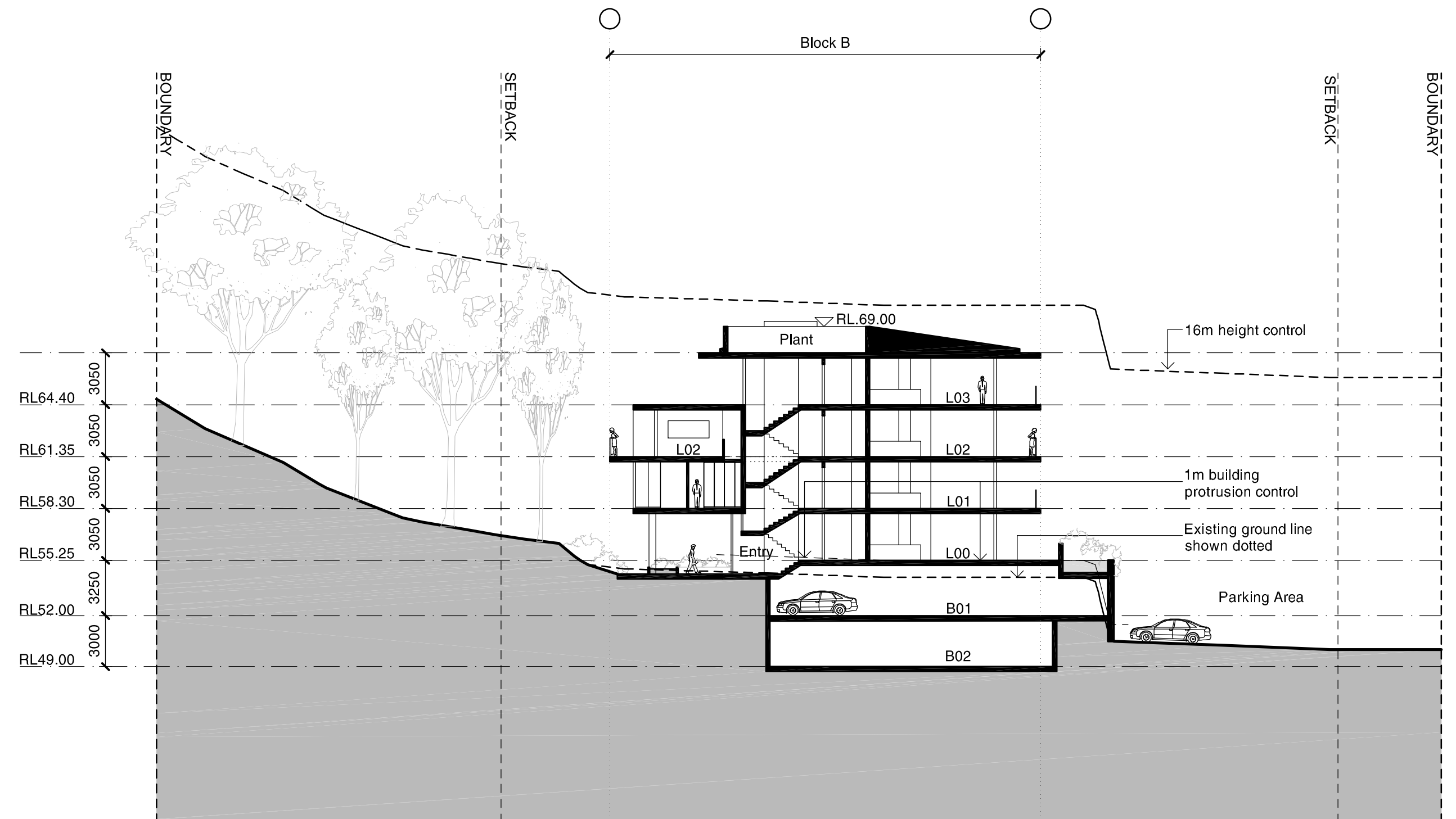
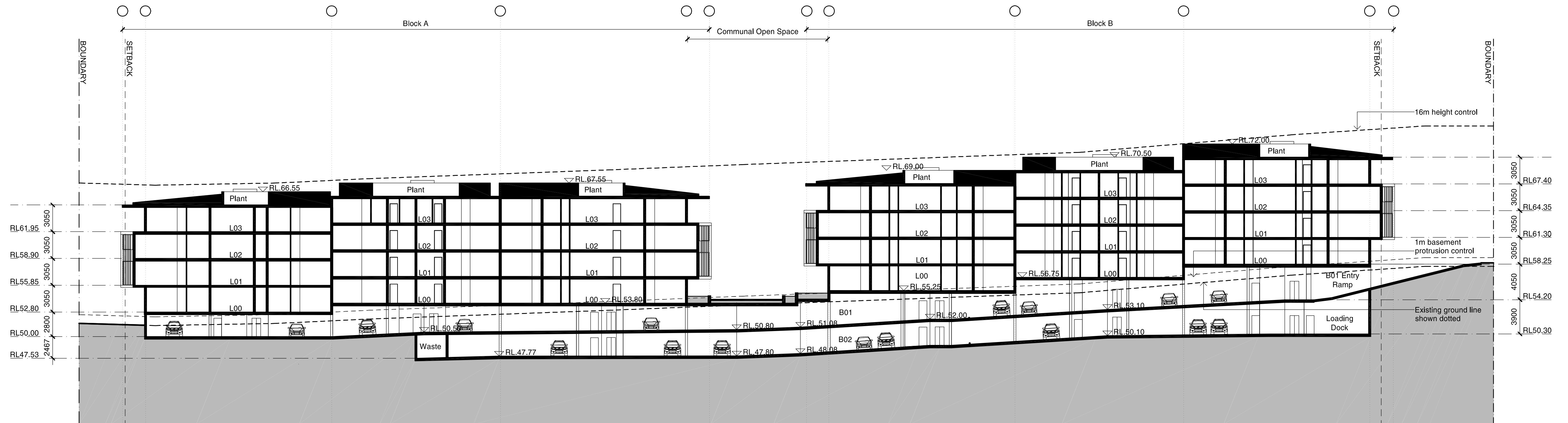


1 Section BB  
02.200 1:250



2 Section CC  
02.200 1:250



3 Section AA  
02.200 1:250

Note:

- Existing trees subject to be removed as part of Stage 0 works not shown on drawings for clarity.
- Existing trees to be retained shown on drawings; refer landscape architects drawings for details of new trees / planting.
- Development to comply with bushfire protection provisions within AS3959-2009 and Planning for Bush Fire Protection 2006.

Plan Legend:

Existing rock (extent assumed)

B	09/11/12 DA Issue	GC	DT		
A	23/07/12 DA Issue	CP	DT		
1	14/05/12 Pre-DA Submission	CP	DT		
Revision	Date	Description	Initial	Checked	

Revision	Date	Description	Initial	Checked	

Precinct 4  
100 Eton Road, Lindfield NSW 2070

Sections AA + BB + CC

Check all dimensions and site conditions prior to commencement of any work, the purchase or ordering of any materials, fittings, plant, services or equipment and the preparation of shop drawings and/or the fabrication of any components.  
Do not scale drawings - refer to figured dimensions only. Any discrepancies shall immediately be referred to the architect for clarification.  
All drawings may not be reproduced or distributed without prior permission from the architect.

Scale	1:250@A1 / 1:500@A3
Drawn	AC
Project No.	s11427
Status	DA
Plot Date	9/11/2012 3:28:19 PM
Plot File	S:\11400-11499\11427_dha_edge\100_main\cad\plots\DA\IP4 ...
Drawing No.	P4_DA08.001[B]

Sydney 1/243 Liverpool Street  
East Sydney NSW 2010 Australia  
T 02 8354 5100 F 02 8354 5199  
email syd@batesmart.com.au  
http://www.batesmart.com.au

Melbourne 1 Nicholson Street  
Melbourne VIC 3000 Australia  
T 03 8664 6200 F 03 8664 6300  
email melb@batesmart.com.au  
http://www.batesmart.com.au

Bates Smart Pty Ltd ABN 70 004 999 400

BATESSMART